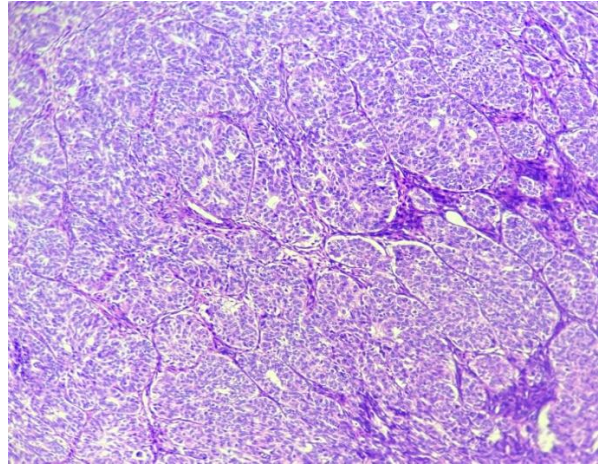


Case of the week – 29.04.23

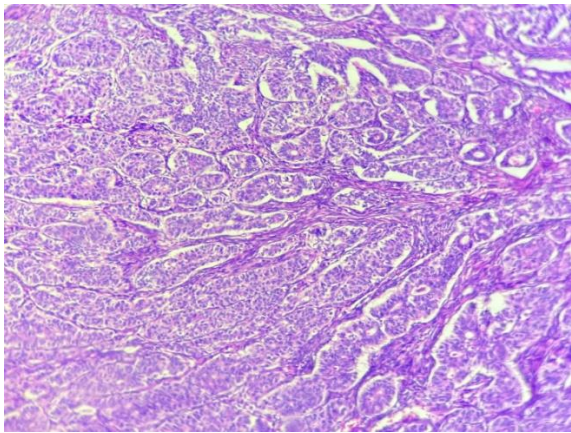
Sertoli cell tumor

Clinical history: A 62 years female came with complaints of pain and swelling in the left iliac fossa. On ultrasonography left ovarian mass is noted.

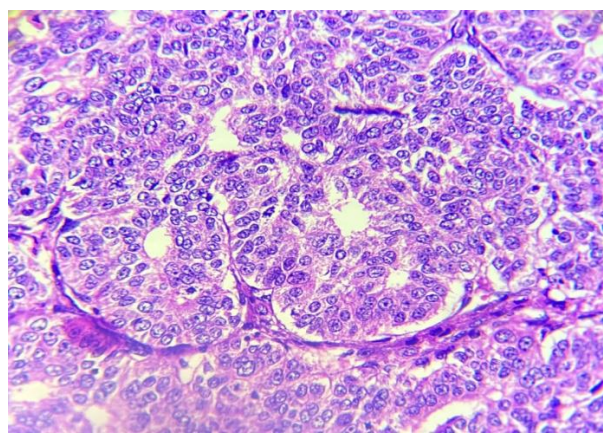
Gross : Received left oophorectomy specimen measuring 5x5cm. external surface – grey white to grey brown, globular. Cut section showed a circumscribed grey yellow to grey white homogenous lesion measuring 4.5x4.5cm. adjacent area showed multiple cortical cysts.



100x



100x



400x

Microscopy : Sections examined from the grey yellow to grey white mass showed cell arranged in tubules, cords, nests and lobules with intervening fibrous septa. Individual cells are round to oval with uniform vesicular nucleus and scant to moderate clear cytoplasm. Intervening stroma showed basement membrane like material around the tubules